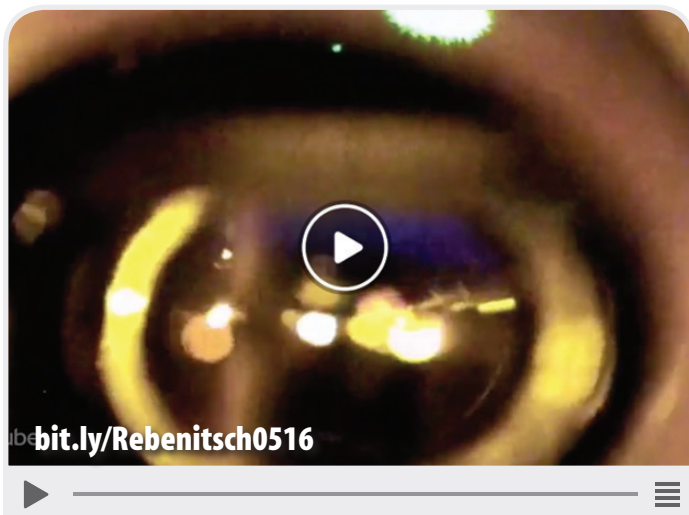


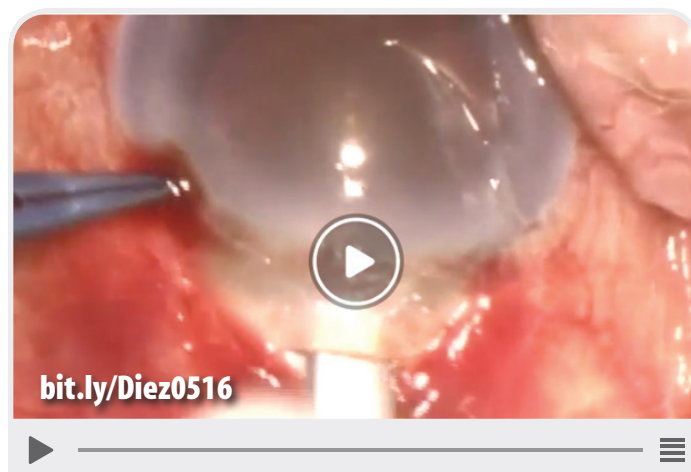


# THIS MONTH ON EYETUBE.NET



## Combined Z-LASIK and Kamra Inlay

BY LUKE REBENITSCH, MD



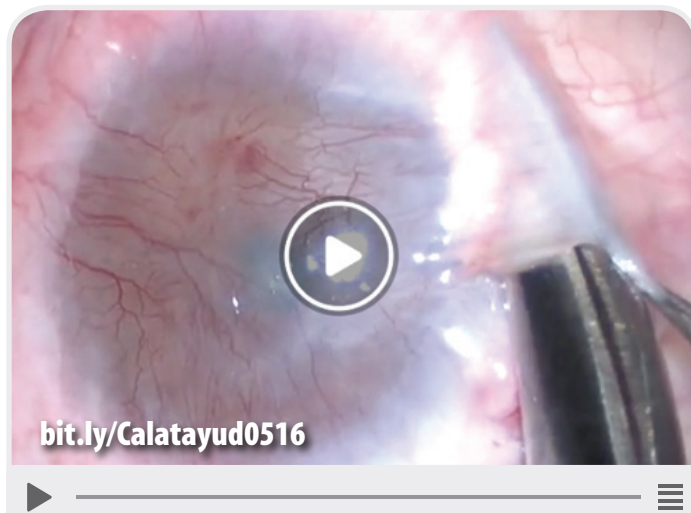
## Spontaneous Malignant Glaucoma During Phacotrabeculectomy

BY RAFAEL CASTAÑEDA DIEZ, MD,  
AND LIZBETH ORDOÑEZ VERDUSCO, MD



## Prevention and Management of Incomplete Laser Capsulotomies

BY SETH M. PANTANELLI, MD, MS



## Autolimbic Transplantation

BY MARTA CALATAYUD, MD, PhD